



Earthwatch Institute connects people with scientists worldwide to conduct environmental research and empowers them with the knowledge they need to conserve the planet.

A Message from the CEO



This year's Annual Report has special significance because at this time one year ago, we were facing the possibility that there might not be another year of Earthwatch to report on. We had cancelled the majority of our expeditions, and the lockdowns were wreaking havoc on the economy and many of our supporters.

Non-profits operate on treacherously thin margins, and Earthwatch Institute is no different. How long could we survive with greatly reduced revenue, and at what point would we be unable to climb out of the massive hole this was creating? Would our staff be OK? What would happen to our scientists and their research? Long days filled with emergency meetings, budget reviews and countless reforecasts ended in many sleepless nights.

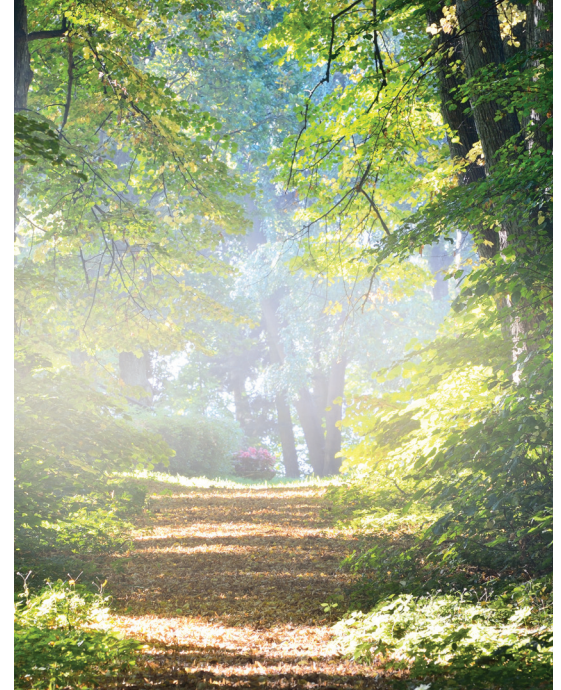
Then came our first glimmer of hope—you. We sent out an SOS, and friends from around the world responded. Volunteers who were booked to field in 2020 donated their expedition contributions instead of getting refunds, and virtual volunteers sold out Earthwatch at Home, our first ever online learning course. Long-time donors, first-time donors, even donors whom we had lost touch with for 15 years—all stepped up and gave what they could. Staff voluntarily went on full furlough or cut their hours and pay. This collective outpouring of support, where everyone gave what and how they could while dealing with their own personal impacts from the pandemic, embodies the spirit at the heart of every Earthwatch expedition: the power of individuals coming together to chip in their part to overcome complex issues.

Today I am thrilled to say that we have taken our first steps down the path to recovery. Three expeditions have re-opened, and we are working tirelessly to safely resume additional projects in the weeks and months ahead. Our corporate partners have expanded their support of Operation Healthy Air, our fastest growing program where company employees and community participants monitor air quality and work to mitigate the risks of unhealthy air in impacted neighborhoods. And this fall marks our 50th anniversary—a proud and humbling milestone for any charitable organization, made even sweeter this year by what we've just been through.

The pandemic has made clear the connections between countries and continents, between environmental health and human health, social justice, and economic security. Our ability to prevent future pandemics will depend on our willingness to address the massive environmental and social challenges that helped pave the way for this one. Earthwatch's mission has never felt more urgent, and we plan to double down on our global efforts to conserve our shared planet. We know that we must think big and expand beyond our traditional programs to engage an even larger and more diverse audience. But, we can only be as ambitious and stretch as far as our donor and volunteer support will carry us.

As we get ready to chart our course for the next fifty years, your continued participation will play a major role in our success. Thank you for standing by Earthwatch during our greatest time of need. Now it's time to get back to work building the healthy, sustainable and just planet we all wish to see—together.

Scott Kania, CEO



U.S. Board of Directors

Chair: Leisha John

Vice Chair: Vittorio Severino

Treasurer: Keith Funston, Jr.

Erin Billman

Amy Ruth Borun

Kevin Bryan

Donald Kendall, Jr.

David Lang

Dr. William Moomaw

Christine Repasy

Judith Santano

U.S. Council

Kevin Anton

Eileen Arbues

Diana Barrett

Mark Cappellano

Mark Carthy

George Eberstadt

Gary Goldring

Gaye Hill

Jeffrey Jakubiak

Whitney Johnson

Merrill Magowan

Bill Martens

Lawrence Mason

Dr. Wallace "J." Nichols

Thomas Nicholson

Catherine Nierras

Dr. Arthur Riggs

Dr. Daniel Rubenstein

Alexandra Goelet Sandell

Ruth Scheer

Christine Bata Schmidt

Leslie Smith

Betsy Snow

Victoria Stack

Amy Ziff

Financial Summary

This Annual Report contains the U.S.-based 2020 financial results of the 501(c)(3) Earthwatch Institute (Oct. 1, 2019–Sep. 30, 2020). In addition to the financials outlined here, Earthwatch has licensee operations in the U.K., Japan, and Australia, which report their financials according to local requirements. Affiliate annual reports may be viewed on our website at earthwatch.org/about/annual-report, along with U.S. Audited Financial Statements and U.S. Form 990.

Earthwatch Institute Tax ID: #23-7168440

Earthwatch Board of Directors

Earthwatch Institute directors are responsible for the leadership and governance of Earthwatch, and for overseeing its strategy and direction. Combining diverse backgrounds, they are ambassadors for the organization and further the Earthwatch mission by setting strategic priorities for its work. Directors are limited to 3 year terms in order to keep fresh the exchange of skills and ideas. We are excited to introduce Kevin Bryan and Judith Santano as two of our new board members.



Kevin Bryan

Kevin brings over twenty years of experience in shaping federal, state, and local public policies that reflect Earthwatch’s values for inclusivity, opportunity, and a sustainable future.

He has spearheaded the formation of a broad-based coalition to champion policies to reduce greenhouse gas emissions in the US transportation sector, and led the growth of a national coalition that secured a presidential directive from President Obama to ensure that federal land management agencies address diversity, equity, and inclusion. Kevin led discussions among major corporations and national environmental groups to address climate change, resulting in recommendations that influenced the American Clean Energy and Security Act of 2009. He has also led the board of the Environmental Leadership Program (ELP), which focuses on developing the premier network of tomorrow’s environmental leaders.

Currently, Kevin is working with several organizations to promote the deepening of equity and diversity in the environmental community and to create programs that will expand career opportunities in the environmental sector for people of color. Kevin is a proud graduate of Howard University, where he received a Bachelor of Science in Civil Engineering. He resides with his wife Rosie in Washington, DC.



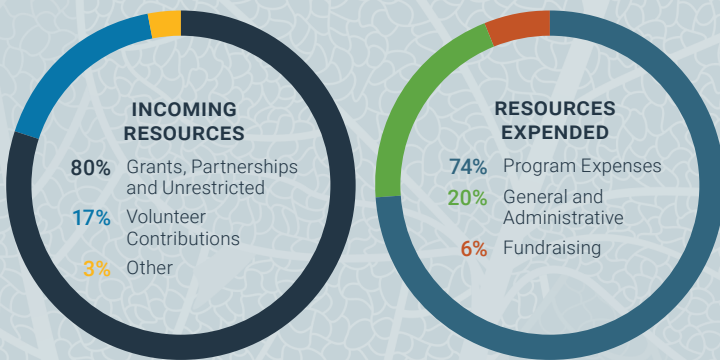
Judith Santano

Judith graduated from Stanford University with a BS in Earth Systems. During her time as an undergraduate, she largely focused on ecology, but also prioritized learning about and practicing environmental education, science

communication, and environmental justice. Apart from being heavily involved in her department, Judith spent a lot of time working with and advocating for First Generation and/or Low Income Students of Color to welcome and foster those communities in different spaces around campus.

Judith’s first experience with Earthwatch was as a participant of the Ignite program—a donor-funded fellowship program for urban high school students—where she spent two weeks in Wyoming studying songbirds. Having grown up in Los Angeles, this was Judith’s first time being immersed in nature, and she was profoundly impacted. She later returned to Earthwatch after her sophomore year of college as an intern to work with education-based programs in Boston.

Judith holds those early experiences and lifelong memories very dear and remains incredibly grateful for the many ways that Earthwatch has helped to shape her life and career. She was recently accepted as a PhD candidate by Tulane University (her top choice) where she will be studying ecology in Ecuador this summer.



Operating Revenue and Expenses for Earthwatch U.S.	FY 2020 (US\$)	FY 2019 (US\$)
Incoming Resources	4,382,766	7,817,605
Resources Expended	4,311,410	7,675,126
Program Expenses	3,192,973	6,422,748
General and Administrative	852,763	971,399
Fundraising	265,674	280,979
Net (Incoming Resources)	71,356	142,479
End of Year Net Assets*	3,880,733	3,281,014

* Includes a loan of \$540,972 from the Paycheck Protection Program (PPP) established by the Coronavirus Aid, Relief and Economic Security Act (CARES). A portion of these funds may be forgiven, as defined in the agreement, and the remainder will be due over a two-year period with interest at 1%.

Lives Remembered

Earthwatch was saddened to lose two special long-time donors and Legacy Society members. However, we are heartened to know that their memories and their life's passions will live on through their generous bequests to Earthwatch.



Karen Elizabeth Stober

Karen was born on October 26, 1959 at Muhlenberg Hospital in Plainfield, NJ. She attended Warren schools and went on to earn a BA in Fine Arts from Farleigh Dickinson University, and an AAS in Computer Science from Raritan Valley Community College.

Karen began her career as a computer operator at AT&T and quickly rose to being a computer programmer before her division was transferred to IBM, where she remained with the company until 2002. She then explored self-employment, eventually pursuing one of her many passions as a personal gardener, which she continued into her final weeks.

Karen loved to horseback ride at Lord Stirling Stables and ski all over the country. She continued to hone her skills as a visual artist by taking courses in graphic design, illustration and photography, and proudly displayed her paintings of animals and nature at local libraries and the Insectropolis museum in Toms River. She loved hot sauces, chili peppers, Star Trek and Star Wars, and playing her trumpet with many different organizations, including the White House Wind Symphony, Brook Arts Center Orchestra, 5 Straws Brass Quartet, and the Sharpshooters Marching Band. She was also a frequent performer at the NJ Renaissance Festival where she acted and played the trumpet, as well as painted stage sets and children's games.

Karen was a faithful twenty-year Earthwatch member and annual donor up until her transition after a very brave 21 month battle with ovarian cancer. Her final gift through her estate will be used to protect the threatened wildlife she loved.



Harriet Meredith Backus Todd

Harriet received a love for reading, horses, and the outdoors from her parents. She regularly hiked in the White and Green Mountains of New England, and summited all of New Hampshire's four-thousand-footers with her husband Rob. During their first hikes together,

they began a lifelong tradition of sharing a kiss at the top of every mountain. They traveled widely together, including a group trek in Nepal to the base camp of Mt. Everest, and often chose trips that combined physical activity, service, and learning, such as volunteering for twelve Earthwatch projects.

She often organized family hiking, canoeing, and skiing trips where she pressed the family to reach a lookout, summit, or creek before lunch. She gave generously to educational and environmental nonprofits, and was active in serving the wider community. Her civic engagement culminated in being elected to two terms as town selectman for Lincoln, MA.

Harriet was a steady, loving presence in the lives of family and friends. On their 50th wedding anniversary, Harriet and Rob were surrounded by loved ones, many of whom attended their wedding.

Harriet was extraordinarily blessed to live 75 years without major illness or injury before she suffered a significant stroke. She joined her first Earthwatch expedition in 1993 and was a steadfast annual supporter. Her bequest to Earthwatch will ensure that future volunteers have the opportunity to learn and serve on expeditions just as she and Rob did for so many years.

“ A society grows great when elders plant trees whose shade they know they shall never sit in. ”

— Proverb



Leaving Your Legacy

Today's environmental threats have been building for decades, and will take many years to undo. Earthwatch is committed to carrying on the fight for a sustainable future for as long as it takes.

Pledge your support for generations to come by leaving a charitable bequest or other planned gift to Earthwatch in your estate plans. Also known as deferred gifts because they won't cost you anything during your lifetime, a bequest can be established simply by adding a sentence or two into your will.

Another easy but impactful form of planned giving occurs when you name Earthwatch Institute as the beneficiary of a retirement fund, life insurance policy, savings account, donor advised fund, or trust fund, either as the sole beneficiary, or as one of multiple beneficiaries of your choosing. Simply contact your financial institution with our name and Federal Tax I.D. (Earthwatch Institute, 23-7168440) to name Earthwatch as your beneficiary.

At this critical moment in history, let your legacy be that you thoughtfully gave the ultimate gift to Earthwatch. Your support of our mission will long be cherished as you help to protect and restore the planet for generations to come.



earthwatch LEGACY SOCIETY

We are honored to recognize the following individuals who have remembered Earthwatch in their estate plans:

Anonymous (24)	Kathryn Lewis
Robert Atwater	Nita Losoponkul
Dorothea de Zafra Atwell	Diana Lynch
Charlotte Bell	Darlene Maurer
George Benson	Sally Wood McDonald
Catherine Blakley	Barbara McEwen
Ursula Brandon	A. Byron Perkins
Channing Briggs	Cyrelle Pinar
Edward Cooper	Stoyell Robbins
Anna Fan	Lisa Roeder
Audrey Farrell	William "Bud" Roeder, Jr.
LeeAnn Faucette	Joni Ross
Gilbert Glass	Susan Sanders
Ken Golden	Lisette Schaub
Delta Greene	Carol Siewert
Susan Gustafson	Karen Stober
Frona Hall	Harriet Todd
Alan Hickenbottom	Harriette Treloar
William Hurley	Joy Valentine
Valerie Hurst	Jo Wilder
Ralph Jankins	Elephare Zimmerman
Lynn D'Addesio Kraus	

Italic: Legacy gift received



Individuals who designate a planned gift to Earthwatch are invited to join Earthwatch's Legacy Society. Membership is voluntary, and you are not required to disclose the details of your gift.

To join the Legacy Society, or to request additional information on planned giving, please return the enclosed envelope, or contact Heather Wilcox, Director of Planned Giving, at hwilcox@earthwatch.org or 978-450-1208.

Celebrate in Style

In 1971, the first group of intrepid Earthwatch volunteers set off for Ethiopia's Amaro mountains to study volcanoes. Fifty years later, more than 200,000 Earthwatch volunteers have joined over 1,400 critical conservation efforts on six continents—and we're not done yet.

Be the first to show your support for Earthwatch and this momentous milestone with the latest Earthwatch clothing and accessories featuring brand new 50th anniversary designs.

earthwatch.threadless.com



Earthwatch Institute
1380 Soldiers Field Rd.
Suite 2700
Boston, MA 02135

Return Service Requested